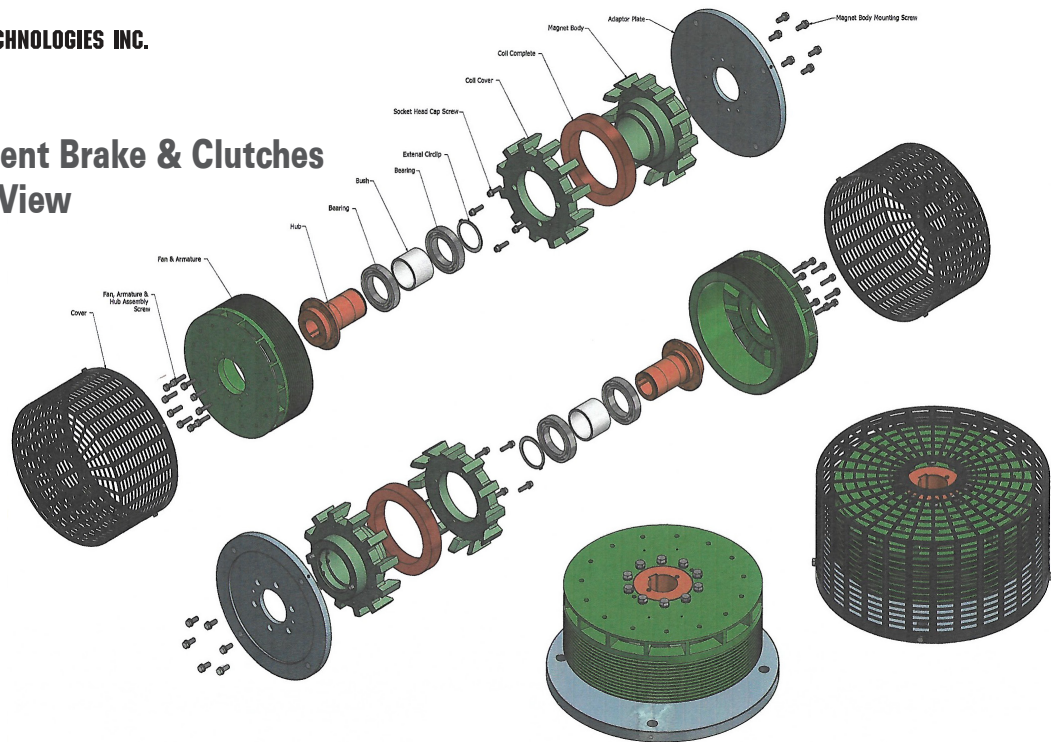


Eddy Current Brake & Clutches Exploded View



EMTorq PRODUCTS INCLUDE

Spring-Engaged Brakes

- motor brakes
- IEC/NEMA flange mount brakes
- caliper brakes
- elevator/lift
- marine duty/washdown

Clutches and Brakes

- shaft mount
- flange mount

Clutch-Brake Modules

- IEC/NEMA flange mount
- shaft in/out foot mount

Servo Brakes

- ultra thin compact mount

Eddy Current Brakes

- shaft - flange - foot mount

Custom OEM Designs



A Division of Torque Technologies
3025 Lakewood Ranch Blvd, Unit 107
Bradenton, FL 34211 USA

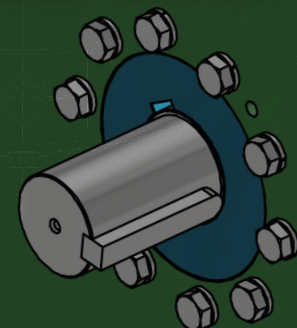
Phone: 941-358-9447

Fax: 941-358-9647

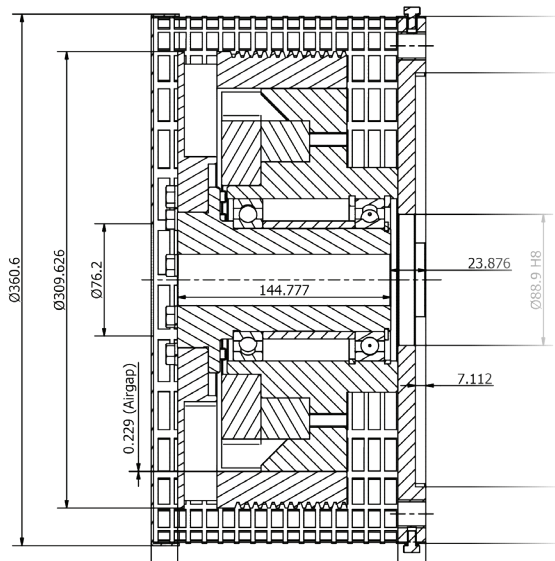
E-mail: sales@goizperusa.com

INSTALLATION INSTRUCTIONS

Eddy Current Brake ECB-XX-SBDF



EMTorq ECB-XX-SBDF Installation Manual



Cross section view
Shaft Mount D-Flange Mount Brake

Thank you for purchasing the EMTorq ECB Eddy Current Brake. Please review this manual before installing and operating.

This is an easy shaft mount/D-flange mount brake. The brake slides onto the motor shaft and the brake D-flange is bolted to the corresponding motor D-flange. The ECB-XX-SBDF is available for 182/184 through 444/445 frame motors.

Typical installation for the ECB-XX-SBDF eddy current brake is to a D-flange wire wound motor often used in crane drives.

Shaft/torque-arm mount and foot mount eddy current brake configurations are available.

IMPORTANT: Follow all safety procedures during installation.

INSPECT BEFORE INSTALLING

1. Shipping damage – Report any shipping damage with the carrier immediately.
2. Hand rotate the outer drum by hand to insure no damage has occurred in shipment.
3. Check the brake exterior, junction box, and wires are in order.
4. Handling – this brake is rigidly constructed. Care must be exercised in handling it properly. Avoid dropping, jarring, or pounding as it can cause serious damage to bearings and other components.
5. Storage – if brake will not be used immediately, set aside in a clean, dry storage area.

MOUNTING THE BRAKE

The brake must slide onto the motor shaft without difficulty. If not, remove and look for burrs, blemishes- anything that would hinder the assembly. **DO NOT IN ANY CASE USE THE FOUR FLANGE MOUNTING HOLES AS A MEANS OF PULLING THE UNIT ON THE SHAFT!** The tendency is to use the mounting screws when close to the final position, this should not be done. When the brake is fully seated on the motor shaft the appropriate screws should be used to secure the flange (4) places.

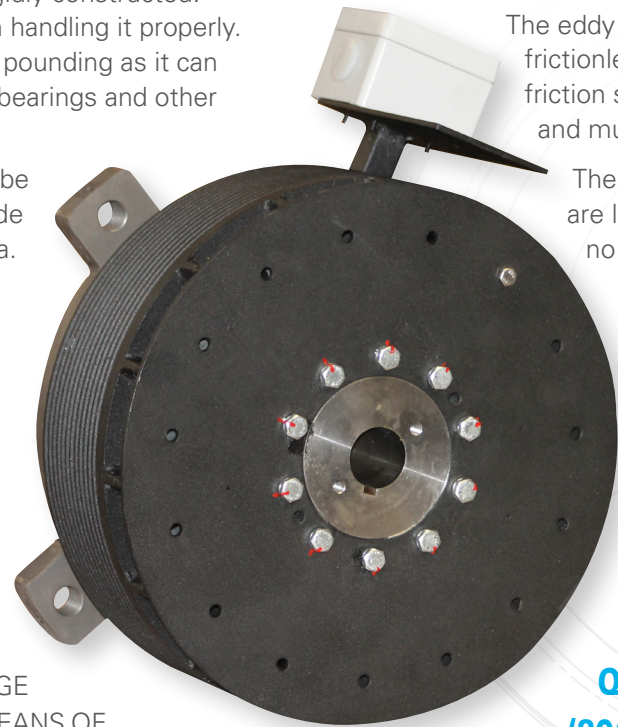
ELECTRICAL CONNECTION

The brake is design for continuous excitation if required. The nominal applied voltage is 100 +/- 10 volts. The current varies according to model size. See brake name plate data for specific information.

MAINTENANCE

The eddy current brake provides frictionless braking. There are no friction surfaces in contact that wear and must be replaced.

There are two ball bearings that are lubricated for life, so there is no relubrication required.



ECB-26-SBDF

Questions?
(800) 358-0844
sales@emtorq.com
www.emtorq.com