

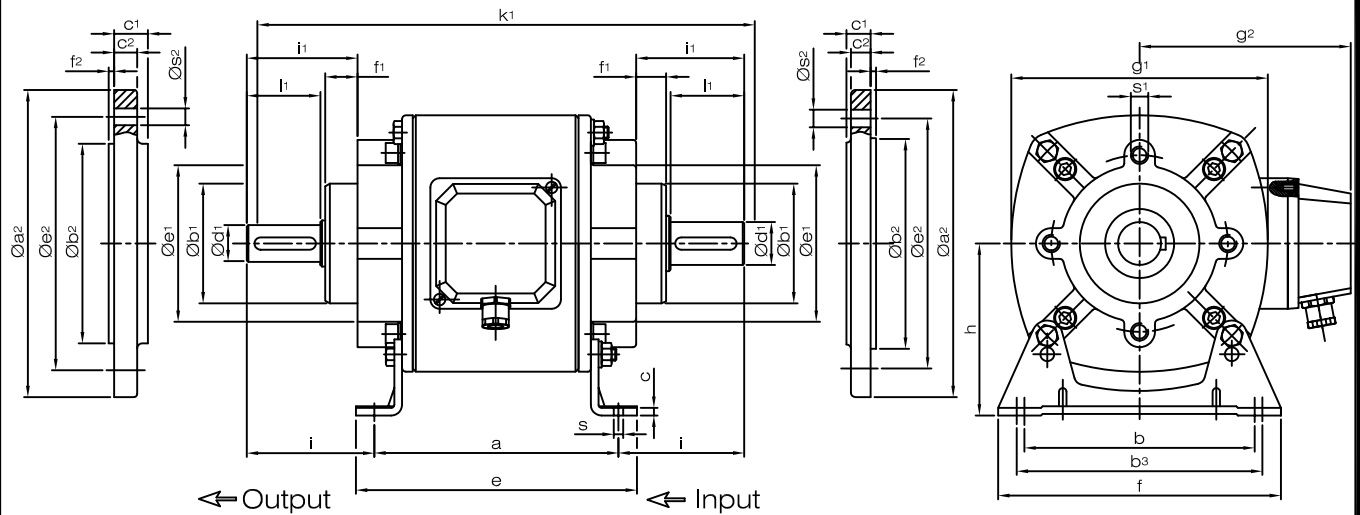


**Emco  
Dynatorq**

Title:  
**SIMPLABLOC E.M. CLUTCH BRAKE UNITS**  
TYPE - 41.800 (Normally off & Encased)

Reference:  
—

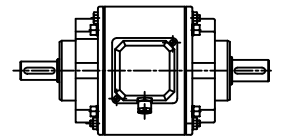
**DIMENSIONS**



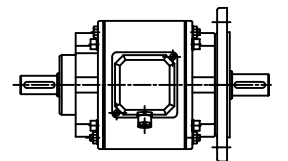
**PARAMETERS**

Size	Mk Nm	Clutch		Brake		b <sub>1</sub> h8	e <sub>1</sub>	d <sub>1</sub> k6	f <sub>1</sub>	g <sub>1</sub>	g <sub>2</sub>	h	i <sub>1</sub>	k <sub>1</sub>	l <sub>1</sub>	s <sub>1</sub>
		P at 20° C														
		W	W													
06	7.5	15	11.5	52	67	11 14	10	90	89	63 71	35 42	183 197	23 30	M6		
08	15	20	16	65	90	14 19	10	114	95	71 80	42 52	230 250	30 40	M8		
10	30	28	21	78	115	19 24	19	140	110	80 90	62 72	280 300	40 50	M10		
12	60	35	28	78	115	24 28	20	167	136	100 112	72 82	324 344	50 60	M10		
16	120	50	38	98	145	28 38	20	210	158	112 132	82 102	380 420	60 80	M12		

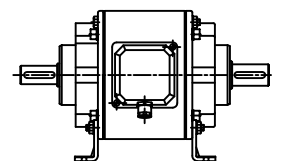
**Designs Available**



← Output ← Input  
TYPE 41.800.□□.10.1 [6]



← Output ← Input  
TYPE 41.800.□□.10.2 [7]



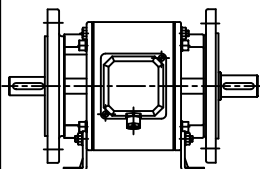
← Output ← Input  
TYPE 41.800.□□.11.1 [6]

**Feet**

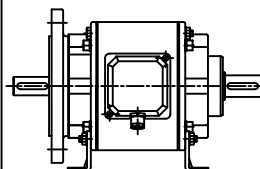
Size	a	b	b <sub>3</sub>	c	e	f	i	s
06	100	80	85	3	115	100	41.5 48.5	7
08	120	105	110	3	140	130	55 65	9
10	140	130	140	4	165	160	70 80	9
12	160	150	160	5	184	180	82 92	11
16	185	185	195	6	215	223	97.5 117.5	13

**Flange**

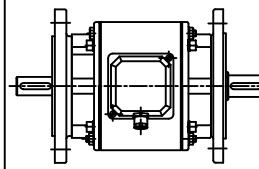
Size	a <sub>2</sub>	b <sub>2</sub> j <sub>7</sub>	c <sub>1</sub>	c <sub>2</sub>	e <sub>2</sub>	f <sub>2</sub>	s <sub>2</sub>
06	140 160	95 110	12	10	115 130	3 3.5	9
08	160 200	110 130	12	9	130 165	3.5 11.5	9
10	200 250	130 180	22	15	165 215	3.5 4	11 13.5
12	200 250	130 180	22	15	165 215	3.5 4	11 13.5
16	250 300	180 230	22	15	215 265	4	13.5



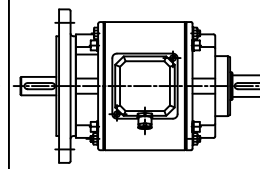
← Output ← Input  
TYPE 41.800. □□.13.2 [7]



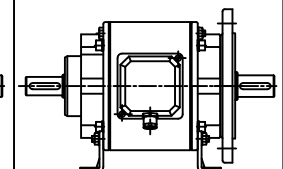
← Output ← Input  
TYPE 41.800. □□.13.1 [6]



← Output ← Input  
TYPE 41.800. □□.12.2 [7]



← Output ← Input  
TYPE 41.800. □□.12.1 [6]



← Output ← Input  
TYPE 41.800. □□.11.2 [7]

- IMPORTANT :**
- 1Nm = 0.102 kgm = 0.737 lb.ft.
  - Mk : Dynamic Torque
  - Standard voltages: 24V.D.C  
Other voltages on request.
  - @ keyways to IS:2048  
Specifications are subject to change without notice.
  - P: Coil power at 20° C

**ORDERING DATA**

- All dimensions are in mm.
- in general - 1.Type 2. Size 3.Design 4.Colt voltage  
Variants - Input shaft diameter  
Input flange diameter  
Out put shaft diameter  
Output flange diameter  
Weight of feet

Drawn *Nulan*  
Appr.  
Date

Drg.No. **L3. 127**